

PART OF S.W. 1/4 OF SECTION 14,
T.5 N., R.2 W., S.L.B. & M.
GREAT BASIN ADDITION

TAXING UNIT: 41

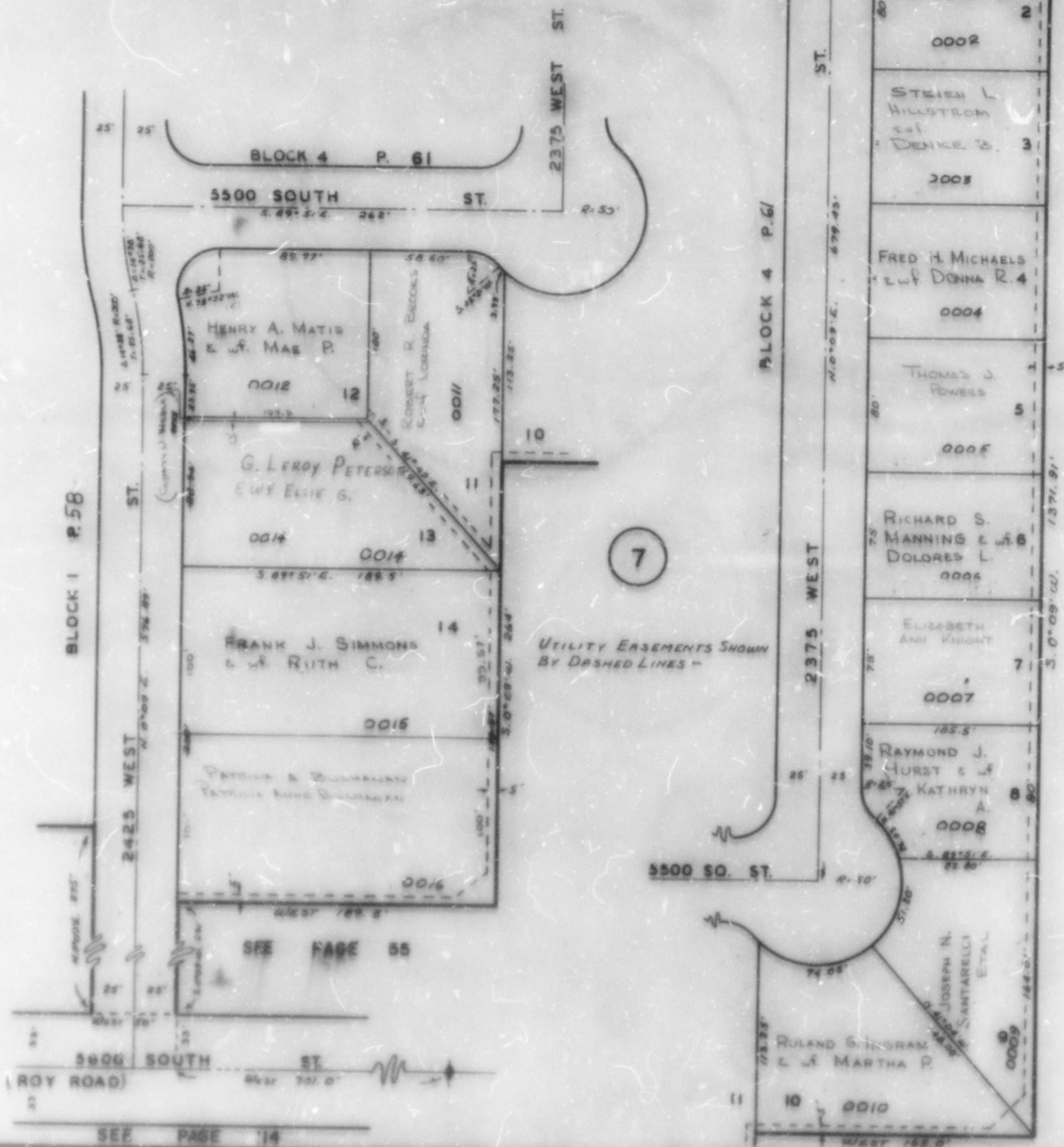
BLOCK 7
IN
ROY CITY

NORTH DAVIS COUNTY REWER DISTRICT

SCALE: 1"=50'

63

PREFIX: 09-063



SEE PAGE 57